

Healthcare Preparedness Program (HPP) Mississippi ESF-8 Healthcare Coalition(MEHC) Strategic Response Plan: Highlights, Mission, Purpose and Organizational Structure



The purpose and benefits of the Statewide MEHC healthcare delivery patterns.



Hospital Preparedness Program (HPP):

Administration of Strategic Preparedness and Response's (ASPR) Hospital Preparedness Program (HPP) provides leadership and funding through cooperative agreements to states, territories, and eligible metropolitan areas to improve the capacity of the health care system to plan for and respond to large-scale emergencies and disasters.

HPP supports regional collaboration and health care preparedness and response by encouraging the development and sustainment of health care coalitions (HCC). These coalitions incentivize often competitive health care organizations with differing priorities and objectives to **work together to prepare for, respond to, and recover from all types of threats and emergencies**. HPP funding also supports trainings and exercises that prepare HCC members to handle real emergencies.

As the **only source of federal funding for health care system readiness**, HPP improves patient outcomes, minimizes the need for federal and supplemental state resources during large-scale emergencies, and enables rapid recovery.



Mississippi ESF-8 Healthcare Coalition(MEHC)

What does ESF Stand for?	Emergency Support Function
ESF 1	Transportation
ESF 2	Communications
ESF 3	Public Works and Engineering
ESF 4	Firefighting
ESF 5	Emergency Management
ESF 6	Mass Care, Emergency Assistance, Housing, and Human Services
ESF 7	Logistics Management and Resource Support
ESF 8	Public Health and Medical Services

MEHC:

HPP is a cooperative agreement (CoAg) program administered by ASPR's National Healthcare Preparedness Programs (NHPP) Branch.

It establishes:

- The foundation for national health care readiness
- Promotes a consistent national focus to improve patient outcomes during emergencies
- Enables rapid health care service resilience and recovery.



HPP's work moves ASPR towards achieving the 2017-2022 Health Care Preparedness and Response Capabilities

Since 2002, investments administered through HPP have improved individual health care entities' preparedness and have built a system for coordinated health care system readiness and response through health care coalitions (HCCs), which represent the ideal state of readiness in the United States and include

- Foundation for Health Care and Medical Readiness
- Health Care and Medical Response Coordination
- Continuity of Health Care Service Delivery
- Medical Surge; In MS, which is a Centralized Agency, creating one HCC: MS Emergency Healthcare Coalition (MEHC).

MEHC Strategic Response Plan Mission Statement:

The mission of the Mississippi Emergency Support Function 8 Healthcare Coalition (MEHC) is to reduce the burden of illness, injury, and loss of life in the event of an emergency or disaster through coordination and communication regarding emergency **preparedness, mitigation, response, and recovery.**



Highlights of the Mississippi Emergency Support Function 8 Healthcare Coalition (MEHC)?

- 1. Building relationships.***
- 2. Communication and information sharing.***
- 3. De-confliction and sharing of resources.***
- 4. Opportunity for Joint Exercise Planning and Execution.***
- 5. Identifying and addressing training and unique resource needs (presented to Council for consideration and approval).***



MEHC Strategic Response Plan Purpose:

- Provide clear understanding of functions, roles, responsibilities and benefits to **improve two-way information sharing** with the result of a single comprehensive operating picture.
- Guide the process of activating, operating and participating in the MEHC that results in maintaining a single comprehensive operating picture.
- Establish membership of the MEHC.
- Build the MEHC Partner Support Network (PSN) database.
- Define the requirement for activation and operation of the MEHC.
- Describe the two-way communication process.
- Outline preparedness activities for MEHC Planners to support local partners in updating their Emergency Operations Plans.



Organizational Structure of the MEHC Leadership Council:

The MEHC Leadership Council provides guidance to the MEHC partners to aid in communications, information sharing and resource allocation before, during, and after an event or disaster. This council consists of director level personnel from each of the following primary sectors:



Organizational Structure of the MEHC Leadership Council:

Emergency Management

- Mississippi Civil Defense Emergency Management Association (MCDEMA)
 - Mississippi Emergency Management Agency (MEMA)

Emergency Medical Services (EMS)

- Mississippians for EMS
- MS State Department of Health (MSDH), Bureau of EMS

Hospitals and Healthcare

- Mississippi Hospital Association
- MSDH Health Facility Planning
- Long Term Care Association(s)



Organizational Structure of the MEHC Leadership Council:

Public Health

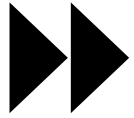
- Mississippi Public Health Association (MPHA)
- MSDH Office of Emergency Planning and Response

Access and Functional Needs :

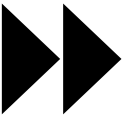
- Mississippi Emergency Management Agency (MEMA)
 - Disability Integration Advisor (DIA)
- Mississippi State Department of Health (MSDH)
 - Planner/At-Risk Coordinator



Organizational Structure of Membership:



Agencies, Associations and Organizations (AAOs) that represent the local members.



Local Members are the local healthcare facilities that make up the backbone of healthcare in Mississippi.



Organizational Structure of AAOs:

- Assisted Living Organizations
- Dental Associations
- Dialysis Organizations
- Emergency management
- Emergency Medical Services
- Fatality Management
- Home Health Organizations
- Hospice Organizations
- Hospitals
- Medical Associations
- Nursing Associations
- Pharmacy Organizations
- Primary Healthcare Organizations
- Tribal: MS Band of Choctaw Indians
- Faith Based
- Military
- Private Sector Businesses
- State Agencies
- Mississippi State Department of Health
- Licensure Organizations



Organizational Structure of Partner Support Network:

A **network of businesses and organizations** that typically have resources on hand that are useful during an emergency response and/or recovery.

***Animal sheltering and veterinarian services**

***Sheltering displaced citizens**

***Clinics** – dentists, physicians, emergency medical technicians, nurses, nurse practitioners

***Communications** – HAM Operators, cellular service carriers, internet service providers

***Equipment** – durable medical equipment, heavy equipment operators

***Fuel suppliers, trucking companies**

***Hardware, home improvement stores**

***Linen cleaning, laundry services**

***Mental and behavioral health** – counselors, psychologists, psychiatrists, ministers

***Pharmacies and pharmacists**

***Retailers**

***Students**

***Transportation**

***Volunteers trained in child and geriatric care, counseling, commercial drivers, response and recovery activities**



Organizational Structure and MEMAs role:

All emergency responses are coordinated through the local Emergency Manager and supported by the Mississippi Emergency Management Agency (MEMA).

The MEHC role to provide support and coordination efforts to ESF-8 on the local and state levels.



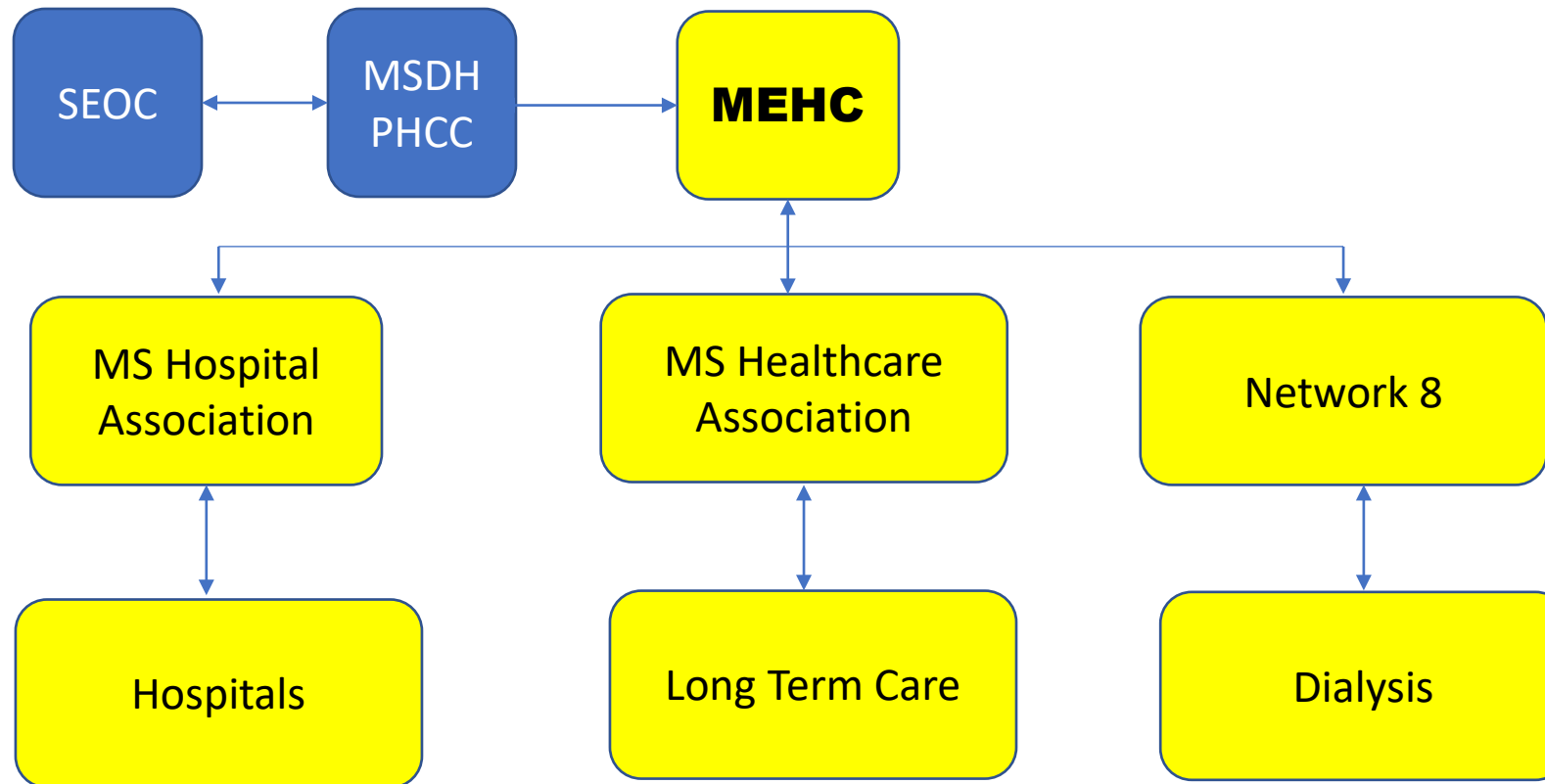
Operations of MEHC Activation:

- The MEHC is supported whenever the MSDH Public Health Command/Coordination Center (PHCC) is activated.
- The MSDH MEHC HPP Director activates MHA to initiate and schedule MEHC AAOs to participate in conference calls; notifying the MEHC Leadership Council.
 - Conference calls continue on a periodic basis to ensure the development and maintenance of a single comprehensive operating picture.
 - Discussion includes but is not limited to scarcity of resources, unmet needs, coordination of resources, and response and recovery.



Operations and the Flow of Information:

The single comprehensive operating picture is dependent on the two-way flow of information.



HPP: MS:

Hospital Preparedness Program (HPP) Recipient Fact Sheets (phe.gov)



HOSPITAL PREPAREDNESS PROGRAM

MISSISSIPPI

HPP FUNDING

39% decrease in funding
since FY 2013



HIGHLIGHTS

- Mississippi (MS) uses HPP funding to build a robust preparedness and response network to support its over 3 million residents.
- State health officials provided three Regional Medical Surge Trainings in 2020.
- Communication improved with the MS Emergency Support Function 8 Healthcare Coalition (MEHC) (e.g., resource needs through inventory, information sharing, daily bed counts).
- MS utilized pre-planned alternate standards of care during its medical response.
- MS worked with groups throughout the state to communicate with health care facilities.

SPOTLIGHT ON RESPONSE

With training on the National Incident Command System, response personnel were quickly mobilized and utilized in cross-functional manners in response to the COVID-19 pandemic. This operational readiness allowed for the state to adapt in accordance with the rapidly evolving event. The clearly delineated chain of command permitted the insertion of secondary and tertiary section chiefs without disrupting or otherwise hindering the state's response efforts.

COVID-19 RESPONSE

- MS coordinated with local officials, law enforcement, emergency management, Department of Transportation, and the National Guard to provide testing to remove the demand from local health care providers.
- The Mississippi State Department of Health, having already established a cloud-based reporting and communication system, quickly and efficiently obtained daily reports from hospitals throughout the state to include all essential elements of information (EEI). These reports helped MS allocate and deliver supplies and equipment to medical facilities when normal procurement avenues proved ineffective.



1 Health Care Coalition

HCC CORE MEMBER PARTICIPATION

2%
of acute care hospitals

0.03%
of emergency medical services

0.03%
of public health agencies

1%
of emergency management agencies

FY19 end-of-year data, HCC count, and map as of 6/30/2020. Participation rate equals # of HCC member organizations divided by the total # of organizations in MS.

<https://msdh.ms.gov/toni.richardson@msdh.ms.gov> www.PHE.gov/HPP HPP@hhs.gov



Additional Resources: Quarterly Informational Memo for MEHC

HEALTHCARE PREPAREDNESS PROGRAM PREPARED. TRAINED. INFORMED.

The purpose of this memo is to provide specialized information to the Mississippi ESF8 Healthcare Coalition (MEHC) audience. Informational memorandums can be a great way to build awareness for coordination, information sharing, and utilizing a platform for training and exercise efforts. As a MEHC member, please share any pertinent information for next quarter's issue.

MSDH BP02 QUARTER 04 MS ESF8 HEALTHCARE COALITION INFORMATIONAL MEMO

In this Issue:

- Memo Purpose
- Visit your training needs website for upcoming Zoom Trainings
- CMS Guideline Updates: QSO-21-15-ALL, Updated Guidance for Emergency Preparedness-Appendix Z of the State Operations Manual (SOM)

HEALTHCARE PREPAREDNESS PROGRAM PREPARED. TRAINED. INFORMED.

The purpose of this memo is to provide specialized information to the Mississippi ESF8 Healthcare Coalition (MEHC) audience. Informational memorandums can be a great way to build awareness for coordination, information sharing and utilizing a platform for training and exercise efforts. **As a MEHC member, please share any pertinent information for next quarter's issue.**

Training needs website <http://hpp4ms.com/>

06/02/2021 8-Hour HAZMAT Refresher Course
06/03/2021 SERIES 2 of 5: Diversity and Inclusion
06/15/2021 HPIC: 2021 Risk Management Grant Writing Workshop
06/16/2021 Strategies to Reduce Rural Unnecessary Opioid Rx
06/16/2021 Do-It Yourself Valuations for Hospitals and Health Systems
06/17/2021 SERIES 3 of 5: Supply Chain Excellence/Post-Pandemic World
06/24/2021 Webinar - Community Needs a New Kind of Emergency Department
06/25/2021 MHA Society for Risk Management Annual Meeting

Upcoming BP03 Quarter 01: A look ahead:

07/15/2021 SERIES 4 of 5 : The Emotional Impact of COVID-19
07/21/2021 Managing Pain Effectively While Reducing Opioid Rx
08/19/2021 SERIES 5 of 5 : A Path Forward: Thriving in Rural Health

Healthcare Preparedness Program (HPP) is a premier training and resource outlet for healthcare workers in Mississippi. The program was created to improve medical surge capacity, community resilience and disaster readiness and response during public health emergencies. Since the programs' inception in 2002, over 500 trainings and certification opportunities have been extended to healthcare workers, statewide; equipment and supplies have been purchased for medical facilities; and collaborative partnerships have been made with local, state, federal and tribal organizations in both public and private sectors. HPP is funded through an Assistant Secretary for Preparedness and Response (ASPR) grant CFDA#93.074 to the Mississippi State Department of Health (MSDH) in with the Mississippi Hospital Association's Health, Education, and Research Foundation.

MSDH is here to serve Mississippi's ESF8 Coalition Partners.

Toni Richardson, CHEP, CHSP, MEHC HPP Director
MS Emergency Healthcare Coalition (MEHC) | Healthcare Preparedness Program (HPP)
Office of Emergency Planning and Response (OEP)
Mississippi State Department of Health
MSDH: www.healthymiss.com

CMS.gov Centers for Medicare & Medicaid Services

QSO-21-15-ALL, Updated Guidance for Emergency Preparedness-Appendix Z of the State Operations Manual (SOM) can be found at:

<https://www.cms.gov/medicareprovider-enrollment-and-certificationsurvey/certificationgeninfo/policy-and-memos-states-and-updated-guidance-emergency-preparedness-appendix-z-state-operations-manual-som>

Contact your MEHC Planner for more information.

FORMS

Get on-demand forms at the click of mouse! Access important forms and documents, as well as publications that highlight critical updates.

http://www.mhanet.org/Online/Preparedness/HPP_Forms.aspx

http://www.mhanet.org/Online/Preparedness/HPP_News.aspx

http://www.mhanet.org/Online/Preparedness/HPP_Training.aspx



MISSISSIPPI
STATE DEPARTMENT OF HEALTH

Visit: Hpp4ms.com

The **Healthcare Preparedness Program (HPP)** is a premier training and resource outlet for healthcare workers in Mississippi. The program was created to improve medical surge capacity, community resilience, and disaster readiness and response during public health emergencies. Since the programs' inception in 2002, over 500 trainings and certification opportunities have been extended to healthcare workers, statewide; equipment and supplies have been purchased for medical facilities; and collaborative partnerships have been made with local, state, federal, and tribal organizations in both public and private sectors.

HPP is funded through an Administration of Strategic Preparedness and Response's (ASPR) grant CFDA#93.074 to the Mississippi State Department of Health (MSDH) in collaboration with the Mississippi Hospital Association's Health, Education, and Research Foundation.

HEALTHCARE PREPAREDNESS PROGRAM
PREPARED. TRAINED. INFORMED.

The **Healthcare Preparedness Program (HPP)** is a premier training and resource outlet for healthcare workers in Mississippi. The program was created to improve medical surge capacity, community resilience and disaster readiness and response during public health emergencies.

Since the program's inception in 2002, over 500 trainings and certification opportunities have been extended to healthcare workers, statewide; equipment and supplies have been purchased for medical facilities; and collaborative partnerships have been made with local, state, federal, and tribal organizations in both public and private sectors.

HPP is funded through an Administration of Strategic Preparedness and Response (ASPR) grant CFDA#93.074 to the Mississippi State Department of Health (MSDH) in collaboration with the Mississippi Hospital Association's Health, Education, and Research Foundation.

MISSISSIPPI EMERGENCY SUPPORT FUNCTION 8 HEALTHCARE COALITION (MEHC)

Through the partnership between the MSDH and MHA-F, the Mississippi ESF-8 Healthcare Coalition (MEHC) was formed. MEHC is the statewide Healthcare Coalition (HCC) for Mississippi. The primary purpose of the Mississippi ESF-8 Healthcare Coalition (MEHC) is to facilitate cross-agency communications and information sharing between state-level partners to identify any unique needs and to propagate a common, timely, common operating picture during emergency responses. Members of the MEHC are top-tier decision-makers for all-hazard emergencies within their organization.

[CLICK HERE TO LEARN MORE ABOUT MEHC](#)

TRAINING
We offer quality training and certification opportunities to healthcare personnel in Mississippi. Check out our current listings and register today!

FORMS AND RESOURCES
Get on-demand forms at the click of a mouse! Access important forms and documents, as well as publications that highlight critical updates.

NEWS
Get the scoop on healthcare preparedness activities in Mississippi. Read about program and peer accomplishments and new events!

HPP UPCOMING EVENTS

[CONTACT HEALTHCARE PREPAREDNESS](#)

Finding Necessary Supplies for Healthcare
If you cannot secure necessary supplies for your healthcare facility, you should continue to submit your needs requests to your county Emergency Management Agency (EMA). If your EMA cannot fill your needs in a timely manner, you may also submit them to this email address: CEPLogistics@msdh.ms.gov to request support from the MSDH Logistics office. Also submit your needs requests to [Teresa Tomes](#) at the MHA Healthcare Preparedness Program.

Mississippi State Department of Health
Mississippi Emergency Support Function 8 Healthcare Coalition (MEHC)
Emergency Planners

North Public Health District I
MEHC Emergency Planner
Anna Claire McBride
381 Hwy 51 N, Batesville, MS 38606
769.209.3754 (Cell); 662.563.4616 (O)
Email: Anna.McBride@msdh.ms.gov

North Public Health District II
MEHC Emergency Planner
Quena Mills
532 South Church Street, Tupelo MS 38802
769.209.3703 (Cell); 662.433.5036 (O)
Email: Quena.Mills1@msdh.ms.gov

Central Public Health District III
MEHC Emergency Planner; EOP Coordinator
Burton "Burt" Schmitz
P.O. Box 87 North, Carrollton MS 38947
769.209.7368 (Cell); 662.237.9225 (O)
Email: Burton.Schmitz@msdh.ms.gov

North Public Health District IV
MEHC Emergency Planner
Amy Billingsley
801 North Lehmsberg, Columbus, MS 39702
769.209.5768 (Cell); 662.370.1337 (O)
Email: Amy.Billingsley@msdh.ms.gov

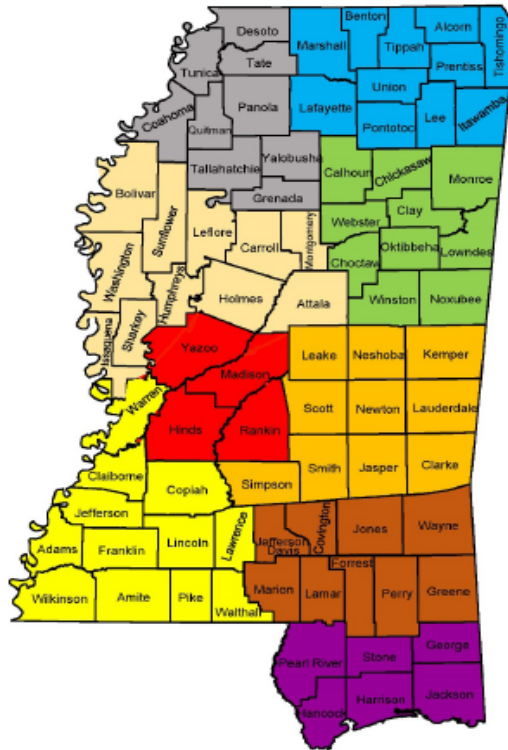
Central Public Health District V
MEHC Emergency Planner
Fabrizio Salazar
5224 Vally Street, POB 5464, Meridian, MS 39302
769.209.5379 (Cell); 601.482.3171 (O)
Email: Byron.Salazar1@msdh.ms.gov

Central Public Health District VI
MEHC Emergency Planner
Terry Hopkins
15776 Highway 15, Decatur MS 39327
769.209.7366 (Cell); 601.635.2337 (O)
Email: Terry.Hopkins@msdh.ms.gov

South Public Health District VII
MEHC Emergency Planner
Amanda Aldridge
1000 Irene Street, Liberty, MS 39645
769.209.7016 (Cell); 601.657.8351 (O)
Email: Amanda.Aldridge@msdh.ms.gov

South Public Health District VIII
MEHC Emergency Planner
Kim Blackwell
166 Ratliff St, Lucedale MS 39452
769-209-2972 (Cell); 601.947.4217 (O)
Email: Kimberly.Blackwell@msdh.ms.gov

South Public Health District IX
MEHC Emergency Planner
Brad Williams
1141 Bayview Avenue, Suite 102, Biloxi MS 39530
769.209.5683 (Cell); 228.436.6770 (O)
Email: Brad.Williams@msdh.ms.gov



Christy Craft Berry OEPR Director 601.933.2449 (O) 601.953.4325 (Cell)	Sharon "Dawn" McMinn OEPR Chief Nurse 662.455.9429 (O) 662.392.4732 (Cell)
Toni Richardson MEHC HPP Director 769.209.5221 (Cell)	Burton "Burt" Schmitz EOP Coordinator 769-209-7368 (Cell)
Robert "Tommy" Boxx OEPR Planning Chief 601.933.7187 (O)	Twyla Jennings OEPR Finance Chief 601.933.2448 (O)
Marshall Horn OEPR Operations/Logistics Chief 601.939.2660 (O) 662.229.6041 (Cell)	

MEHC Planner Map



Emergency Preparedness Nurses Map

North Region A

Samantha Reed
Agency cell 769-209-7442
Office 662-534-1926
E mail: samantha.reed@msdh.ms.gov

North Region B

Kim Manasco
Agency cell 601-502-3230
Office 662-439-1509
E mail: kimberly.manasco@msdh.ms.gov

North Region C

Kayla Frizzell
Agency cell 769-209-7440
Office 662-841-9015
E mail: kayla.frizzell@msdh.ms.gov

Central Region A

Liz Bang
Agency cell 601-260-1038
Office 601-981-2304
E mail: lizabeth.bang@msdh.ms.gov

Central Region B

Pamela Davis-Thomas
Agency cell 769-268-5213
Office 601-482-3171
E mail: pamela.davis-thomas@msdh.ms.gov

Central Region C

Lisa Tedford
Agency cell 662-312-4945
Office 662-291-7677
E mail: lisa.tedford@msdh.ms.gov

South Region A

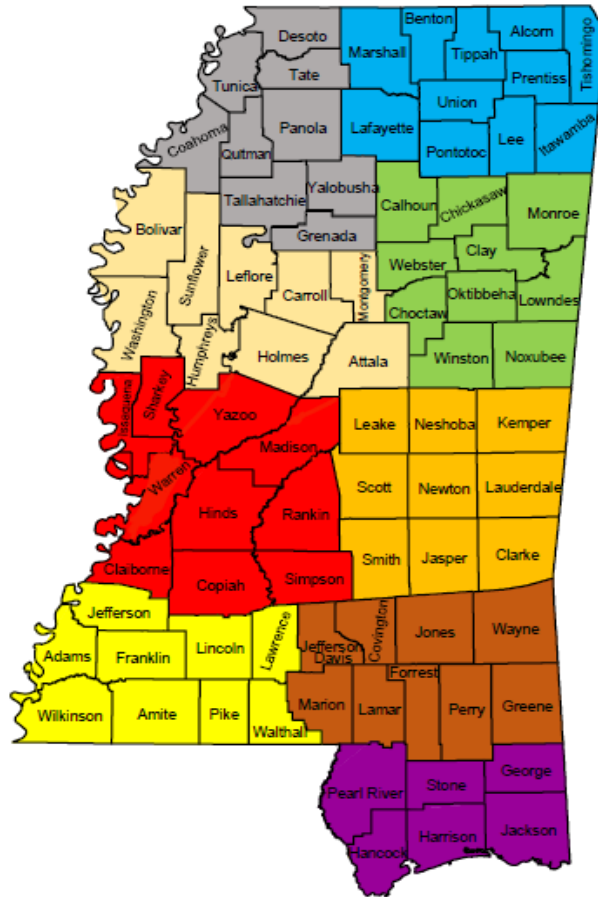
Sarah McCain
Agency cell 769-209-7441
Office 601-736-2676
E mail: sarah.mccain@msdh.ms.gov

South Region B

Elaine Pitts
Agency cell – 601-540-1058
Office 601-426-3258
E mail: Theresa.pitts@msdh.ms.gov

South Region C

Lori Musa
Agency cell 228-297-4024
Office 288-436-6770
E mail: lori.musa@msdh.ms.gov



Emergency Preparedness Nurses Map





MISSISSIPPI STATE
DEPARTMENT OF HEALTH

ERC Response Area Map

ERC Response Area Map

ERC 41
Vacant

Heath Williams, ERC 42

Emergency Response Coordinator, North
532 South Church St, Tupelo, MS 38801
662-455-9429 (O)
christopher.williams@msdh.ms.gov

Edwin Mitchell, ERC 43

Emergency Response Coordinator, North
2600 Browning Rd, Greenwood, MS 38930
662-455-9429 (O)
edwin.mitchell@msdh.ms.gov

Curtis Jernigan, ERC 44

Emergency Response Coordinator, North 323
N Jefferson St, Houston, MS 38851
662-312-8634 (C), 662-456-3737 (O)
curtis.jernigan@msdh.ms.gov

Matt Head, ERC 45

Emergency Response Coordinator, Central
131 Freightways Dr., Jackson, MS 39208
601-213-7376 (C), 601-939-2660 (O)
matthew.head@msdh.ms.gov

James Blackwell, ERC 46

Emergency Response Coordinator, Central
15776 Hwy 15 North, Decatur, MS 39327
601-624-9864 (C), 601-635-2337 (O)
james.blackwell@msdh.ms.gov

Steve Sartin, ERC 47

Emergency Response Coordinator, Southern
1212 Northpark, Brookhaven, MS 39602
769-798-9421 (C), 601-823-2205 (O)
steven.sartin@msdh.ms.gov

ERC 48
Vacant

Jeremy Hickman, ERC 49

Emergency Response Coordinator, Southern
1640 Coy Ave., Wiggins, MS 39577
769-209-5964 (C), 601-928-3177 (O)
jeremy.hickman@msdh.ms.gov



Marshall Horn

Operations & Logistics Section Chief, Statewide 131
Freightways Dr., Jackson, MS 39208
601-939-2660 (O)
marshall.horn@msdh.ms.gov



MISSISSIPPI
STATE DEPARTMENT OF HEALTH

Teresa Jones, MSN, RN
Healthcare Preparedness Program Director
Mississippi Hospital Association
Health, Research, and Educational Foundation

Mailing Address: 116 Woodgreen Dr.
Madison, MS 39110

EMAIL: tjones@mhanet.org

MEHC: www.hpp4ms.com

OFFICE: 601-368-3228

CELL: 601-506-2729



Toni Richardson, CHEP, CHSP

MSDH MEHC HPP Bureau Director II

MS Emergency Healthcare Coalition (MEHC) | Healthcare Preparedness Program (HPP)

Office of Emergency Planning and Response (OEPR)

Mailing Address: MSDH Southern Public Health Region

1141 Bayview Avenue, Suite 102, Biloxi, MS 39530

EMAIL: toni.richardson@msdh.ms.gov

MSDH: www.healthymississippi.com

MEHC: www.hpp4ms.com

CELL: (769) 209-5221



Questions?

